

SCIENCE inhealth

Life Sciences Challenge

972 PUPILS FROM 42 SCHOOLS
ACROSS WALES.

Impact:

- Challenging pupils to look beyond the science curriculum and to think like a scientist.
- Raising aspirations and recognising achievement in maths and science.
- Following participation in the quiz 80% of pupils had increased enthusiasm for science.



I now have more enthusiasm to learn extracurricular science while being competitive.”

PUPIL FEEDBACK



The challenge made it fun to learn science.”

PUPIL FEEDBACK

Science in Health Public Lectures

342 MEMBERS OF THE PUBLIC,
SECONDARY SCHOOL PUPILS AND
PROFESSIONALS ATTENDED THE
ONLINE SERIES.

Impact:

- Delivering expert lectures on current hot topics in health research.
- Providing opportunity to engage with experts and ask questions.

Science in Health Work Experience

15 PUPILS FROM 14 DIFFERENT
SCHOOLS AND COLLEGES
ATTENDED A ONE-WEEK WORK
EXPERIENCE PROGRAMME.

Impact:

- Providing an understanding of a scientist's role and highlighting the wide range of career opportunities available with a degree in science or medicine.
- Providing an insight into real world science and enabling participants to reflect on their experience for their university applications.



The highlight of my work placement was being able to gain memorable experiences in a variety of different

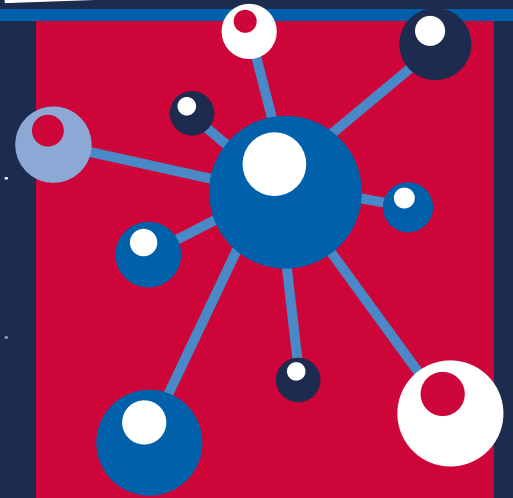
research labs. This gave me a crucial insight into the scientific field.”

PUPIL FEEDBACK



I gained a better understanding of the variety of opportunities and career paths in biochemical and biomedical sciences. I am much more sure of the degree I want to apply for and more excited for my future!”

PUPIL FEEDBACK



Science in Health Live!

OVER 400 PUPILS FROM
17 SCHOOLS AND 9 COLLEGES
ACROSS WALES.

Impact:

83%

felt the event had helped them to further their future career goals.

79%

agreed that the event had inspired them towards a career in science in health.



My SiH experience was extremely insightful – I found the explanation and exposure to the machinery utilised very interesting in its application from COVID to genetics. This paired with the extremely friendly staff made the experience intriguing as I had never been inside a laboratory before today. This is not an experience I will ever forget. Thank you so much for making a positive impact!”

PUPIL FEEDBACK



SUPERBUGS

THE MICROBIAL WORLD IN,
ON AND AROUND US

<https://www.superbugs.online>

SUPERBUGS WEBSITE (WWW.SUPERBUGS.ONLINE)
WITH >20K VIEWS BY >13K VISITORS

43.5% OF VISITS FROM THE UK;
USA, IRELAND, GERMANY, AUSTRALIA,
INDIA, SPAIN, FRANCE, CANADA,
MALAYSIA, NIGERIA AND TANZANIA EACH
WITH >100 VISITS

IN PERSON ENGAGEMENT WITH >150 PEOPLE

EXPANSION OF SOCIAL MEDIA PRESENCE

Impact:

- 6 peer reviewed publications.



Widening Access to Medicine Mentoring Scheme (WAMMS)

1026 PUPILS FROM 39 SCHOOLS AND 6 COLLEGES
ACROSS WALES.

Impact:

- Recognition of the value of peer support and mentoring to Welsh pupils considering medicine.
- Support of the Welsh Government priority to increase the numbers of Welsh domiciled pupils applying to study medicine and promoting careers in Wales once qualified.

“ I found the session very informative,
I feel as if I have a better understanding
of applying to medicine.”
PUPIL FEEDBACK

“ There were some unique pieces of
advice that I hadn't considered before.”
PUPIL FEEDBACK



Promoting Academic and Community Excellence (PACE)

PACE Primary

80 PUPILS FROM
2 PRIMARY SCHOOLS
IN CARDIFF

Impact:

- Inspires pupils to see university as a possibility for them.
- Offers primary school pupils a chance to see what it is like to be a university student and challenges them with regards to societal stereotypes when considering healthcare professional jobs.
- Gives an opportunity for medical students to develop their teaching and communication skills, acting as tutors and role models, engaging with a very young audience.

“ This has been an inspirational experience for pupils. They enjoyed the interactive nature of the sessions.” PACE PRIMARY
TEACHER FEEDBACK

PACE Summer School

60 PUPILS FROM
4 SECONDARY SCHOOLS
IN CARDIFF

Impact:

- A raised awareness of the requirements for studying medicine at university.
- Pupils felt they were more likely to apply to university after discovering the support and resources available at university.
- An opportunity for medical students to develop their teaching and communication skills.

Other activity

- **Primary School Science Session – Infection, Blood and Guts** (M CLEMENT, M WILLIAMS, M AL-TALIB, D PENN-RIPLEY)
- **Grangetown Careers and Role Model Week** (K NORRIS, M CLEMENT, S HUGHES – WALES CANCER RESEARCH CENTRE)
- **In2STEM Work Experience Placements** (K LIDDIARD, A POON-KING, N RASTOGI - WALES CANCER RESEARCH CENTRE)
- **Rhiwbina Library Code Club** (P BRENNAN)
- **Neuroscience in the Valleys** (G SMITH)
- **Eisteddfod 2024** (WALES CANCER RESEARCH CENTRE)
- **ESRC Festival of Science Event** (LIFESPAN MULTIMORBIDITY RESEARCH COLLABORATIVE (LINC) RESEARCH TEAM)
- **Destination STEM** (K REED)
- **Cardiff University Primary School Graduation Event** (K REED)
- **Primary School workshop – Cells in our Body** (K REED)



Follow us @CUmedicengage

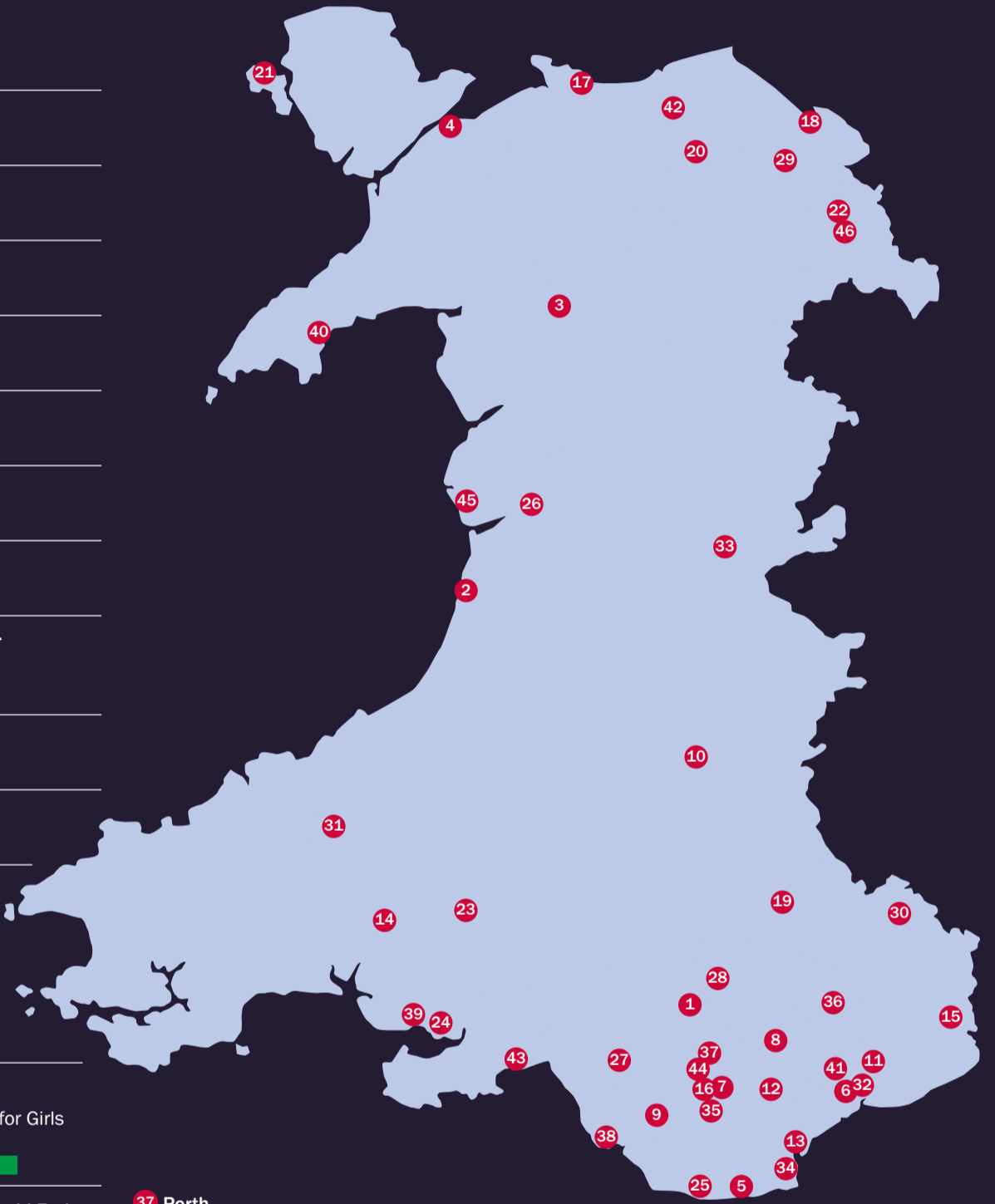
To find out more email: medicengagement@cardiff.ac.uk



Schools engagement activity across Wales 2023-24

Gweithgaredd ymgysylltu ag ysgolion 2023-24

- 1** **Aberdare | Aberdâr**
Ysgol Gyfun Rhydywaun
- 2** **Aberystwyth**
Ysgol Gyfun Penweddig
Ysgol Penglais
- 3** **Bala | Y Bala**
Ysgol Godre'r Berwyn
- 4** **Bangor**
Ysgol Tryfan
- 5** **Barry | Y Barri**
Jenner Park Primary School
Ysgol Bro Morgannwg
- 6** **Bassaleg**
Bassaleg School
- 7** **Beddau**
Bryncelynnog Comprehensive School
- 8** **Blackwood | Y Coed Duon**
Blackwood Comprehensive School
- 9** **Bridgend | Pen-y-bont ar Ogwr**
Bridgend College
Brynteg School
- 10** **Builth Wells | Llanfair-ym-Muallt**
Ysgol Calon Cymru
- 11** **Caerleon | Caerllion**
Caerleon Comprehensive School
- 12** **Caerphilly | Caerffili**
St Cenydd School
St Martin's School
- 13** **Cardiff | Caerdydd**
Bishop of Llandaff High School
Cantonian High School
Cardiff & Vale College
Cardiff High School
Cardiff Sixth Form College
Cathays High School
Cathedral School, Llandaff
Corpus Christi Catholic High School
Eastern High School
Fitzalan High School
King's Monkton School
Kitchener Primary School
Lansdowne Primary School
Llanishen High School
Radyr Comprehensive School
St David's Catholic Sixth Form College
St Mary the Virgin CIW Primary School
St Teilo's CIW High School
Willowbrook Primary School
Willows High School
Windsor Clive Primary School
Whitchurch High School
Whitchurch Primary School
Ysgol Bro Edern
Ysgol Gyfun Gymraeg Glantaf
- 14** **Carmarthen | Caerfyrddin**
Queen Elizabeth High School
Ysgol Bro Myrddin
- 15** **Chepstow**
Chepstow School
- 16** **Church Village | Pentre'r Eglwys**
Ysgol Gyfun Garth Olwg
- 17** **Colwyn Bay**
Ysgol Eirias
- 18** **Connahs Quay | Cei Connah**
Coleg Cambria
- 19** **Crickhowell | Y Drenewydd**
Crickhowell High School
- 20** **Denbigh**
St Brigid's School
- 21** **Holyhead**
Ysgol Caergybi
- 22** **Hope**
Castell Alun High School
- 23** **Llandeilo**
Ysgol Bro Dinefwr
- 24** **Llanelli**
Ysgol Y Strade
- 25** **Llantwit Major | Llanilltud Fawr**
Llantwit Major School
UWC Atlantic College
- 26** **Machynlleth**
Ysgol Bro Hyddgen
- 27** **Maesteg**
Ysgol Maesteg
- 28** **Merthyr Tydfil | Merthyr Tudful**
Bishop Hedley School
Cyfarthfa High School
Merthyr College
- 29** **Mold | Yr Wyddgrug**
Ysgol Maes Garmon
- 30** **Monmouth | Mynwy**
(Haberdashers) Monmouth School for Girls
Monmouth Comprehensive School
- 31** **Newcastle Emlyn | Castell Newydd Emlyn**
Ysgol Gyfun Emlyn
- 32** **Newport | Casnewydd**
Coleg Gwent
Lliswerry High School
Newport High School
Rougemont School
St Joseph's RC High School
St Julian's High School
Ysgol Gwent Is Coed
- 33** **Newtown | Cas-gwent**
Newtown High School
- 34** **Penarth**
Stanwell School
St Cyres Comprehensive School
Westbourne School
- 35** **Pontyclun**
Y Pant Comprehensive School
Ysgol Llanhari
- 36** **Pontypool | Pont-y-pŵl**
St Alban's RC High School
West Monmouth Comprehensive School
Ysgol Gyfun Gwynllyw



- 37** **Porth**
Porth Community School
Ysgol Cwm Rhondda
- 38** **Porthcawl**
Porthcawl Comprehensive School
- 39** **Pwll**
Coleg Sir Gâr
- 40** **Pwllheli**
Ysgol Glan Y Mor
- 41** **Risca**
Risca Comprehensive School
- 42** **Saint Asaph | Llanelwy**
Ysgol Uwchradd Glan Clwyd
- 43** **Swansea | Abertawe**
Bishop Vaughan School
Gower College
Olchfa School
Ysgol Gyfun Gwyr
Ysgol Maesydderwen
- 44** **Tonyrefail**
Tonyrefail Community School
- 45** **Tywyn**
Ysgol Uwchradd Tywyn
- 46** **Wrexham | Wrecsam**
St Joseph's Catholic and Anglican High

Activities | Gweithgareddau

- Science in Health Live | Gwyddoniaeth ym Maes Iechyd - yn Fyw!
- Life Sciences Challenge | Her Gwyddorau Bywyd
- Work Experience | Profiad Gwaith
- Widening Access to Medicine Mentoring Scheme | Cynllun Mentora Ehangu Mynediad at Feddygaeth
- Promoting Academic and Community Excellence | Hyrwyddo Rhagoriaeth Academaidd a Chymunedol
- Other | Arall

Welsh Index of Multiple Deprivation (WIMD) (% pupils in 50% most deprived areas) | Mynegai Amddifadedd Lluosog Cymru (WIMD) (% y disgyblion yn 50% yr ardaloedd mwyaf difreintiedig)

- WIMD (80-100%)
- WIMD (60-80%)