

# Engaging young people across Wales 2022-2023

## SCIENCE in health

### Life Sciences Challenge

**728 pupils** FROM 40 SCHOOLS ACROSS WALES



**Impact:**

- Challenging pupils to look beyond the science curriculum and to think like a scientist.
- Raising aspirations and recognising achievement in maths and science.

### Science in Health Work Experience

**21 pupils** FROM 15 DIFFERENT SCHOOLS  
AND COLLEGES ATTENDED A ONE-WEEK WORK  
EXPERIENCE PROGRAMME

**Impact:**

- Providing an understanding of the role of a scientist, as well as the wide range of career opportunities available as a result of obtaining a degree in science or medicine.
- Providing a rich insight into science in the real world, enabling them to reflect on their experience to include in their University applications.

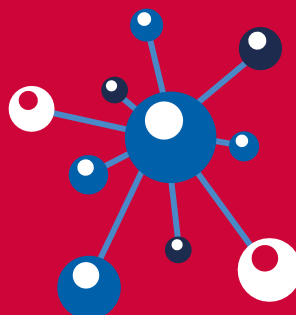


### Science in Health Live!

**OVER 400 pupils**  
FROM 22 SCHOOLS AND 8  
COLLEGES WITHIN WALES

**Impact:**

- **90%** felt the event had helped them to further their future career goals
- **58%** strongly agreed that the event had inspired them towards a career in science in health

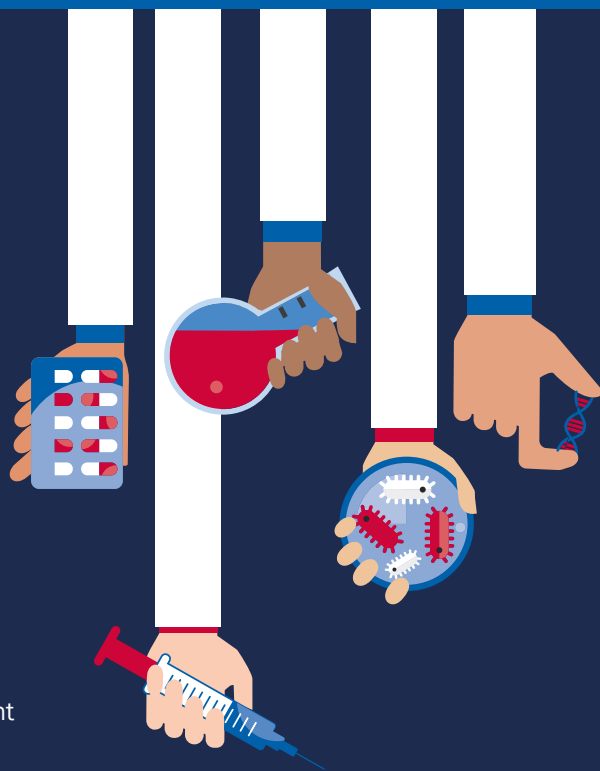


### Science in Health Public Lectures

**UP TO 100 members**  
OF THE PUBLIC,  
SECONDARY  
SCHOOL PUPILS AND  
PROFESSIONALS JOINED  
EACH LECTURE

**Impact:**

- Delivering expert lectures on current hot topics in health research.
- Providing opportunity to engage with experts and ask questions.
- Recordings can be accessed [here](#).



# SUPERBUGS

**12,380** VISITORS ON THE WEBSITE

FOLLOWERS ON TWITTER (X) GREW TO **1,860**  
WITH **>408,000** IMPRESSIONS

## Impact:

- Combining in-person workshops and events with online educational resources.
- Raising awareness and increasing understanding of infection, hygiene, vaccines and antimicrobial resistance.
- Training MSc students in public engagement and science communication.
- Collaborating with teachers across the UK and Ireland and partners in Liberia and Tanzania.

<https://www.superbugs.online/>



## Widening Access to Medicine Mentoring Scheme (WAMMS)

**695 pupils** FROM 33 SCHOOLS AND 4 COLLEGES  
ACROSS WALES

## Impact:

- Recognition of the value of peer support and mentoring to Welsh pupils considering medicine.
- Supporting the Welsh Government priority to increase the numbers of Welsh domiciled pupils applying to study medicine and promoting careers in Wales once qualified.



Follow us @CUmedicengage

To find out more email: [medicengagement@cardiff.ac.uk](mailto:medicengagement@cardiff.ac.uk)



## Promoting Academic and Community Excellence (PACE)

**50 pupils**

FROM YEARS 9-11 FITZALAN SCHOOL, CARDIFF

## Impact:

- Pupils said they were more likely to apply to university after participating in the PACE project.
- Pupils enjoyed tailored tuition on science and medicine topics, and meeting the medical students.
- An opportunity for medical students to develop their teaching and communication skills.



## Other activity

- Mentoring prospective 6th form students for medical school entry (F RAWLINSON)
- Primary School interactive microbial session (M CLEMENT)
- Primary School science fair (J HEWITT)
- Year 7 science fair (H CLARKE)
- Careers in Genomics at Careers Carousel event (K REED)
- Nuffield Research Placement (K REED)
- In2Science placements (N HARRISON, D MADDISON, R DENTON & CENTRE FOR TRIALS RESEARCH)
- Wales Kidney Research Unit (WKRU) Open Lab event (C COLMONT & WKRU)
- Making space for nature – community co-production (ACCELERATE CLINICAL INNOVATION HUB)
- Rhiwbina Library Code Club (P BRENNAN)

# Ymgysylltu â phobl ifanc ledled Cymru 2022-2023

## GWYDDONIAETH mewn iechyd

### Her y Gwyddorau Bywyd

728 disgybl o 40 YSGOL LEDLED CYMRU



#### Effaith:

- Herio disgyblion i edrych y tu hwnt i'r cwricwlwm gwyddoniaeth ac i feddwl fel gwyddonwyr.
- Codi dyheadau a chydabod cyflawniadau ym maes mathemateg a gwyddoniaeth.

### Profiad Gwaith "Gwyddoniaeth ym Maes Iechyd"

BU I 21 disgybl o 15 YSGOL A CHOLEG  
GYMRYD RHAN MEWN RHAGLEN PROFIAID  
GWAITH WYTHNOS O HYD

#### Effaith:

- Dealltwriaeth o rôl y gwyddonydd, yn ogystal â'r ystod eang o gyfleoedd gyrfa sydd ar gael o ganlyniad i ennill gradd ym maes gwyddoniaeth neu feddygaeth.
- Cyflwynwyd gwybodaeth gyfoethog ynghylch gwyddoniaeth yn y byd go iawn, gan eu galluogi i fyfyrio ar eu profiad yn eu ceisiadau i Brifysgolion.

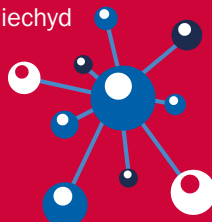


### Gwyddoniaeth ym Maes Iechyd – yn Fyw!

MWY NA 400 disgybl  
o 22 YSGOL AC 8 COLEG  
YNG NGHYMURU

#### Effaith:

- Teimlai **90%** fod y digwyddiad wedi eu helpu i ddatblygu eu nodau gyrfa ar gyfer y dyfodol
- Roedd **58%** yn cytuno'n gryf bod y digwyddiad wedi eu hysbrydoli i ddilyn gyrfa mewn gwyddoniaeth ym maes iechyd



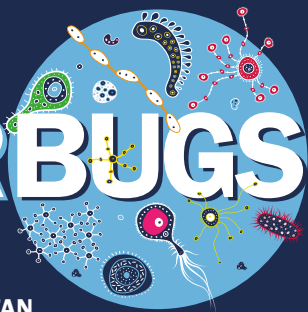
### Darlithoedd Cyhoeddus ar Wyddoniaeth ym maes Iechyd

BU I HYD AT **100 aelod**  
O'R CYHOEDD, DISGYBL  
YSGOL UWCHRADD  
A GWEITHIWR  
PROFFESIYNOL YMUNO  
Â PHOB DARLITH

#### Effaith:

- Darlithoedd arbenigol ar bynciau llosg ym maes ymchwil iechyd.
- Â chyfle i ymgysylltu ag arbenigwyr a holi cwestiynau.
- Gellir cyrchu recordiadau [yma](http://yma).

# SUPERBUGS



**12,380** YMWELYDD I'R WEFAN

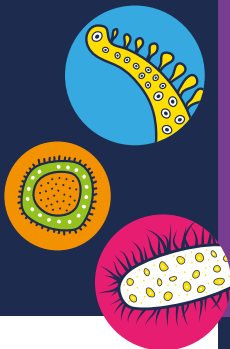
CYNNYDD YN NIFER Y DILYNWYR AR TWITTER (X) I

**1,860** GYDA **>408,000** YMATEB

## Effaith:

- Cyfuno gweithdai a digwyddiadau wyneb yn wyneb gydag adnoddau addysgol ar-lein.
- Codi ymwybyddiaeth a chynyddu dealltwriaeth ynghylch heintiau, hylendid, brechlynnau ac ymwrthedd gwrthficrobaidd.
- Hyfforddi myfyrwyr MSc i ymgysylltu â'r cyhoedd a chyfathrebu ynghylch gwyddoniaeth.
- Cydweithio ag athrawon ledled y DU ac Iwerddon a phartneriaid yn Liberia a Tanzania.

<https://cy.superbugs.online/>



## Cynllun Mentora Ehangu Mynediad at Feddygaeth (WAMMS)

**695 disgybl** o 33 YSGOL A 4 COLEG LEDLED CYMRU

## Effaith:

- Cydnabod gwerth cymorth a mentora gan gyd-fyfyrwyr i ddisgyblion yng Nghymru sy'n ystyried meddygaeth.
- Cefnogi blaenoriaeth Llywodraeth Cymru i gynyddu nifer y disgyblion sy'n hanu o Gymru sy'n gwneud cais i astudio meddygaeth, gan ddilyn gyrfaoedd yng Nghymru ar ôl cymhwyso.



Dilynwch ni @CUmedicengage

I gael gwybod rhagor e-bostiwrch: [medicengagement@caerdydd.ac.uk](mailto:medicengagement@caerdydd.ac.uk)



## Hyrwyddo Rhagoriaeth Academaidd a Chymunedol (PACE)

### 50 Disgybl:

O FLYNYDDOEDD 9-11 YSGOL FITZALAN, CAERDYDD

## Effaith:

- Dywedodd disgyblion eu bod yn fwy tebygol o wneud cais i brifysgol ar ôl cymryd rhan ym mhrosiect PACE.
- Fe fu i'r disgyblion fwynhau'r hyfforddiant wedi'i deilwra ar bynciau gwyddoniaeth a meddygaeth, a chwrrd â'r myfyrwyr ym maes meddygaeth.
- Cyfle i fyfyrwyr meddygol ddatblygu eu sgiliau addysgu a chyfathrebu.



## Gweithgarwch Arall

- Mentora darpar fyfyrwyr chweched dosbarth ar gyfer mynediad at ysgol feddygol (F RAWLINSON)
- Sesiwn ryngweithiol ar gyfer Ysgolion Cynradd ar fibrobau (M CLEMENT)
- Ffair wyddoniaeth ar gyfer Ysgolion Cynradd (J HEWITT)
- Ffair wyddoniaeth ar gyfer Blwyddyn 7 (H CLARKE)
- Gyrfaoedd ym maes Genomeg mewn digwyddiad Carwsél Gyrfaoedd (K REED)
- Lleoliad Ymchwil Nuffield (K REED)
- Lleoliadau In2Science (N HARRISON, D MADDISON, R DENTON A'R GANOLFAN TREIALON YMCHWIL)
- Digwyddiad Labordy Agored Uned Ymchwil Arenol Cymru (WKRU) (C COLMONT A WKRU)
- Creu lle i natur – cyd-gynhyrchu cymunedol (HWB CYFLYMU ARLOESI CLINIGOL)
- Clwb Codio Llyfrgell Rhiwbeina (P BRENNAN)



# Schools Engagement Activity 2022-23

## Gweithgaredd ymgysylltu ag ysgolion 2022-23

**1** **Aberdare | Abordâr**

St John the Baptist CIW High School  
Ysgol Gyfun Rhydywaun

**2** **Aberystwyth**

Ysgol Penglais  
Ysgol Gyfun Penweddig

**3** **Bala | Y Bala**

Ysgol Godre'r Berwyn

**4** **Bangor**

Ysgol Tryfan

**5** **Barry | Y Barri**

Ysgol Bro Morgannwg

**6** **Bassaleg**

Bassaleg

**7** **Beddau**

Bryncelynog Comprehensive School

**8** **Bethesda**

Ysgol Dyffryn Ogwen

**9** **Blackwood | Y Coed Duon**

Blackwood Comprehensive School  
Ysgol Gyfun Cwm Rhymni

**10** **Botwnnog, Llyn**

Ysgol Botwnnog

**11** **Bridgend | Pen-y-bont ar Ogwr**

Archbishop McGrath Catholic High School  
Brynteg School

**12** **Caerleon | Caerllion**

Caerleon Comprehensive School

**13** **Caerphilly | Caerffili**

Bedwas High School  
St Cenydd School  
St Martin's

**14** **Cardiff | Caerdydd**

Bishop of Llandaff High School  
Cardiff & Vale College  
Cardiff High School  
Cardiff Sixth Form College  
Cantonian  
Cathays High School  
Cathedral School, Llandaff  
Corpus Christi  
Fitzalan High School  
Howells's School, Llandaff  
Llanishen High School  
Radyr Comprehensive School  
St David's Catholic Sixth Form College  
St John's College  
St Teilo's C-In-W High School  
Whitchurch High School  
Ysgol Gyfun Gymraeg Glantaf

**15** **Carmarthen | Caerfyrddin**

Queen Elizabeth High School  
Ysgol Bro Myrddin

**16** **Church Village | Pentre'r Eglwys**

Ysgol Gyfun Garth Olwg

**17** **Connah's Quay**

Connah's Quay School

**18** **Cowbridge | Y Bont Faen**

Cowbridge Comprehensive School

**19** **Crymch**

Ysgol Bro Preseli

**20** **Haverfordwest**

Haverfordwest High School  
Pembrokeshire College

**21** **Lampeter | Llanbedr Pont Steffan**

Ysgol Bro Pedr

**22** **Llandeilo**

Ysgol Bro Dinefwr

**23** **Llandysul**

Ysgol Bro Teifi

**24** **Llanelli**

Coedcae School  
Ysgol Maes y Gwendraeth  
Ysgol Pen Rhos Primary School

**25** **Llanrug**

Ysgol Brynrefail

**26** **Llantwit Major | Llanilltud Fawr**

Llantwit Major School  
UWC Atlantic College

**27** **Merthyr Tydfil | Merthyr Tudful**

Merthyr College

**28** **Mold**

Alun School

**29** **Monmouth | Mynwy**

(Haberdashers) Monmouth School for Girls  
Monmouth Comprehensive School

**30** **Mountain Ash | Aberpennar**

Our Ladys RC Primary School  
Mountain Ash High School

**31** **Newcastle Emlyn | Castell Newydd Emlyn**

Ysgol Gyfun Emlyn

**32** **Newport | Casnewydd**

Coleg Gwent  
Newport High School  
St Joseph's RC High School  
St. Julian's High School

**33** **Pembroke**

Ysgol Harri Tudur

**34** **Penarth**

Stanwell School  
St Cyres Comprehensive School  
Westbourne School

**35** **Pontyclun**

Y Pant Comprehensive  
Ysgol Llanhari

**36** **Pontypool | Pont-y-pŵl**

St Alban's  
West Monmouth Comprehensive School  
Ysgol Gyfun Gwynllyw

**37** **Pontypridd**

Pontypridd High School

**38** **Porth**

Porth County Community

**39** **Porthcawl**

Porthcawl Comprehensive

**40** **Pwll**

Coleg Sir Gâr

**41** **Pwllheli**

Ysgol Glan Y Mor

**42** **Risca**

Risca Comprehensive School

**43** **Saint Asaph | Llanelwy**

Ysgol Uwchradd Glan Clwyd

**44** **Swansea | Abertawe**

Bishop Vaughan School  
Ysgol Gyfun Gwyr

**45** **Tenby | Dinbych-y-pysgod**

Greenhill School

**46** **Treorchy**

Treorchy Comprehensive School

**47** **Tywyn**

Ysgol Uwchradd Tywyn

**48** **Whitland | Hendy-gwyn ar Daf**

Dyffryn Taf School

**49** **Wrexham | Wrecsam**

St Joseph's Catholic And Anglican High

**50** **Ystrad Mynach**

Coleg y Cymoedd  
Lewis Girls School

**Multi-site**  
Coleg Cambria (Swansea)  
Gower college (Flintshire)

