

Top 100 in
the world for
architecture
and the built
environment

Source: QS World University Rankings by Subject 2024

Top 5 in
the UK for
architecture

Source: The Guardian University Guide 2024
Complete University Guide 2024
The Times Good University Guide 2024



The practice of architecture is transformative, shaping the world we inhabit while reflecting our cultures, values and aspirations. Crucial to the pursuit of a sustainable future, architects create and re-invent spaces to minimize environmental impact and preserve resources.

Here at the Welsh School of Architecture, we believe architecture should enrich people's lives while also ensuring the preservation of the planet for future generations. Your education will be shaped by experts who are having a direct impact on progress towards a genuinely sustainable built environment. You'll be immersed in a culture of innovation in design and development, and an academic community focused on balancing progress with preservation.

**Architecture holds
the profound
potential to shape
our world for
the better**

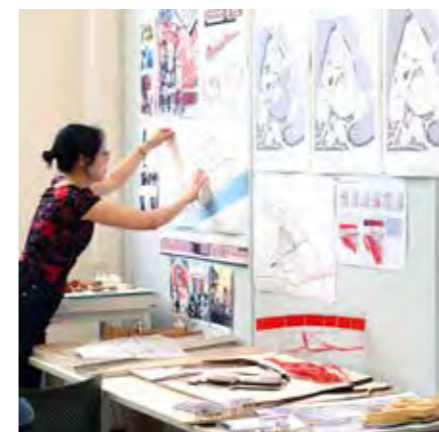
Design ethically
Create innovatively
Explore curiously
Think critically



Creativity and imagination are just the starting point for your development as an architect. Here, we embrace the notion of 'grounded creativity,' which means letting your imagination take flight in ways that are still firmly grounded in the realities that shape our world.

We'll challenge you to look holistically at how buildings are made, how they are used and their impact on the wider world. Topics relating to the historical, theoretical, cultural, political and geographical dimensions of architecture are interwoven across all our modules in a fresh and contemporary approach to learning. Integrating these themes across your years of study highlights how different areas of study intersect, encouraging you to think critically and reflectively about design, and to understand and challenge established principles.

Underpinning this is our immersive studio culture, a community of practice encouraging collaboration, exploration, and creative risk-taking alongside fellow students, school staff, and industry practitioners. Tackling real world problems with creativity and innovation, you'll start to develop a strong sense of your own emerging approach to design.



In the heart of the city centre and nestled between parks and other university buildings is our grade II listed Bute Building, a harmonious fusion of neoclassical architecture and contemporary facilities.



Facilities



Our design studios lie at the heart of our school. Here, you'll become part of a vibrant community of creators who collaborate, discuss, and learn together. Equipped with configurable furniture, light tables, and cutting areas, the studio offer ample resources for design exploration during extended working hours.

You'll access both the tools and expertise for model-making in our dedicated workshops. Here you'll find tools ranging from hand tools, routers and band saws to laser cutters, hot wire foam cutters, 3D printers and CNC machines. These are distributed across our wood and metal workshops, digital lab and robotics lab. We also have facilities for wet casting and spray painting, ensuring that students can experiment and be creative across a wide range of media. Over 90% of the material we use in the wood workshop is recycled, reflecting our ethos of sustainability.

You'll be able to source the resources you need in our dedicated architecture library, from books to supplier catalogues.

And right at the centre of our building is our double-height Exhibition Space, bringing design to life with design shows, exhibitions, workshops, conferences and more.

Exhibition

“Students are given the opportunity to create an event that is personal to the current cohorts, and that the students can be proud of. It also gives us the chance to make new contacts within the wider architectural world, as so many external practitioners visit the exhibition.

The exhibition showcases the extensive body of work created by the students over the year and gives us the opportunity to share our work with a broader audience.”

Adam Hogan | Architecture BSc/MArch



“Our time at the Welsh School of Architecture has been incredible. You can expect plenty of great site visits, and new, extraordinary friendships with people from all over the world.”

Joe Dare | Architecture BSc

Architectural Studies BSc

Studying architecture integrates elements from the arts, humanities, sciences and social sciences, providing a thorough understanding of the built environment and the nature of architectural design.

Through your taught modules, you'll study the varied historical, theoretical, cultural, political and geographical dimensions of architecture. You'll be encouraged to think about how architecture is made, how it performs and how technological choices can support the wellbeing of present and future generations and care for the planet.

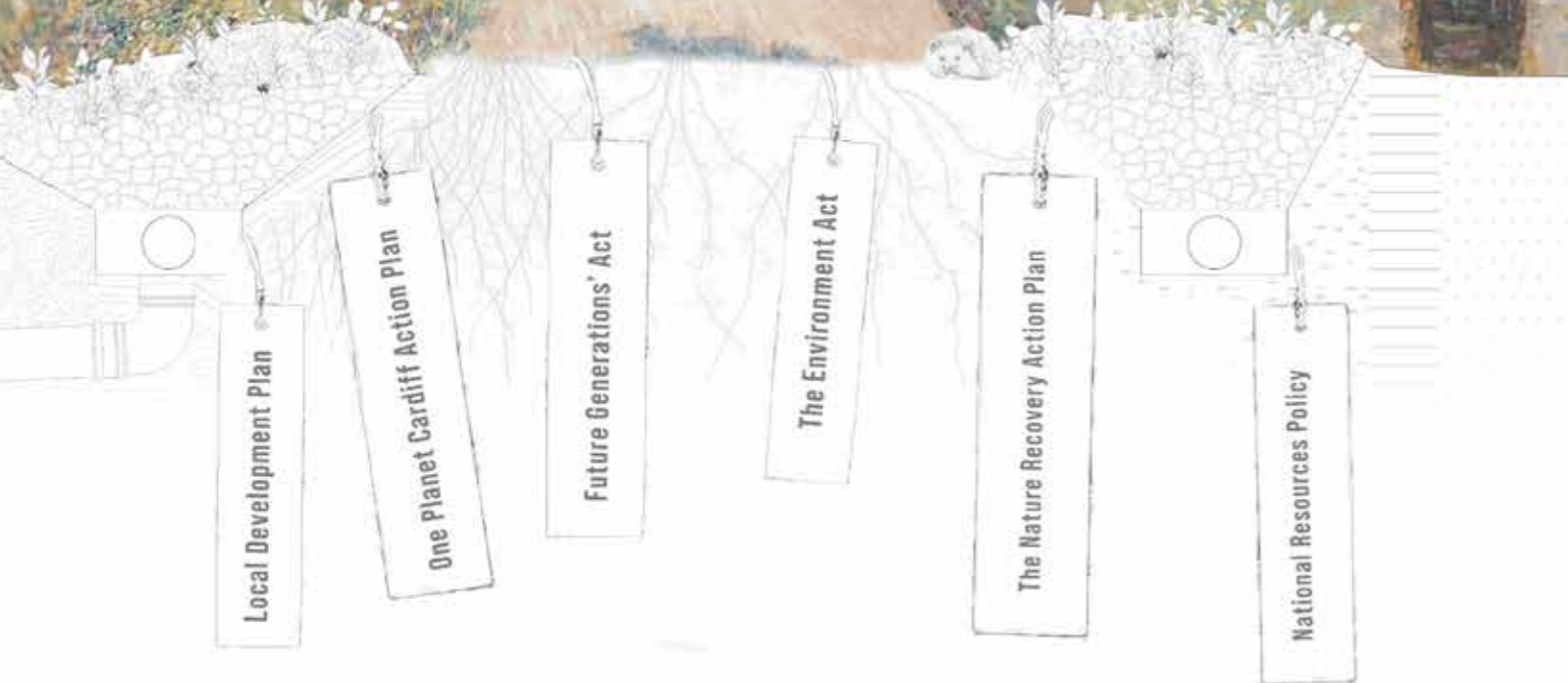
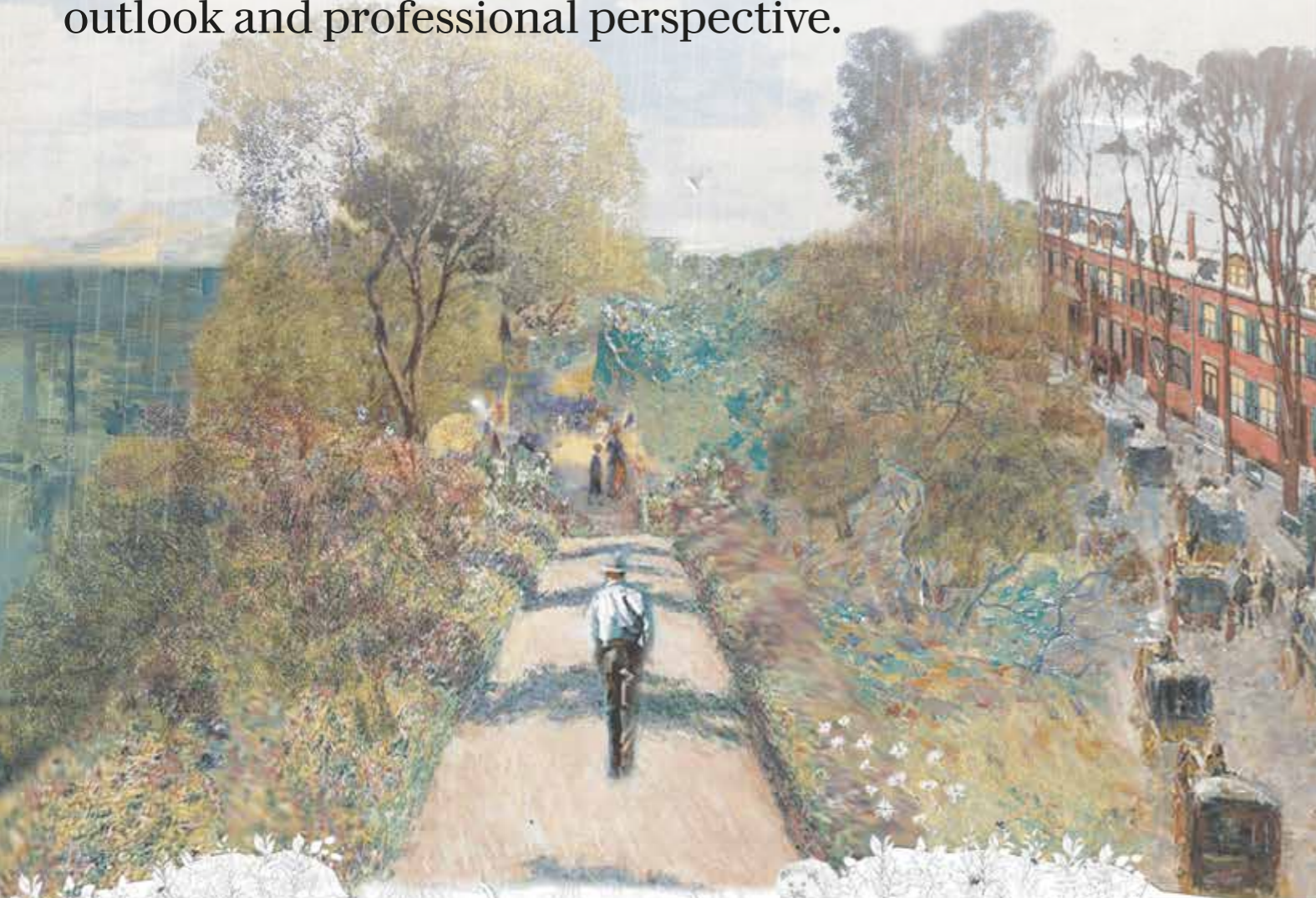
You'll explore issues around professional and ethical responsibility, contemplating the architect's role in shaping society and addressing global challenges in alignment with the UN Sustainable Development Goals.

Design project work is core to the practice of architecture, so we'll immerse you in real-world issues in a collaborative studio environment. Through your design projects you'll engage with issues like climate change in imaginative and innovative ways, grappling with creative, ethical, global, climatic and professional concerns.

The programme is currently validated by the Royal Institute of British Architects (RIBA) and prescribed by the Architects Registration Board (ARB). Following graduation from the BSc, to become a registered architect in the United Kingdom you will need to complete a MArch and a professional practice qualification such as our Postgraduate Diploma in Architecture: Professional Practice.



Taking you to an advanced level of architectural design, our two-year MArch combines the practical and theoretical. You'll learn from your experience of professional practice while developing your personal outlook and professional perspective.



Master of Architecture MArch

“My time at the Welsh School of Architecture was an incredibly rewarding journey. I was fully immersed in all that the school had to offer, I loved that there was so much to learn and the diversity of knowledge gave me confidence when moving into practice.”

Ross Hartland | BSc, MArch graduate



The first year of the programme will be spent predominantly on a placement in architectural practice. Your second year will be spent on a dissertation and design thesis, immersing yourself in the dynamic and collaborative studio culture of our School.

Your design studies across both years will involve imaginative engagement with global challenges. You will further your understanding of how architecture is made and how it performs, reflecting on how your technological choices can support the wellbeing of present and future generations.

You'll extend your existing understandings of the historical, theoretical, cultural, political, and geographical dimensions of the discipline. With a focus on innovation, professionalism and commercial awareness, you'll be encouraged to reflect critically on the wider significance of personal decisions and actions as an architect.

World-leading teacher-practitioners and researchers will encourage you to develop new critical and creative approaches to design. As with the BSc, the design studio will provide the ideal space for you to experiment with design, take creative risks and expand your thinking. You'll be able to take your studies in a direction that reflects your own interests through a process of creativity and discovery.

The programme is currently validated by the Royal Institute of British Architects (RIBA) and prescribed by the Architects Registration Board (ARB). Following graduation from the programme, to become a registered architect in the United Kingdom you will need to complete a professional practice qualification, for example our Postgraduate Diploma in Architecture: Professional Practice.

Applications

Architectural Studies (BSc)

Our typical entry requirement for admissions onto the BSc Architectural Studies is AAA/AAB (A-level). We will take Extended Project Qualification (EPQ) into consideration when making offers. This grade range reflects our typical standard and contextual offers. We carefully consider your contextual data (the circumstances in which you've been studying) upon application. Eligible students applying for this course will be given an offer at the lower end of the advertised grade range.

To be considered for entry, you should apply online via the UCAS website using the 'UCAS Apply' facility. To use this facility, you need to log on to: www.ucas.ac.uk/apply

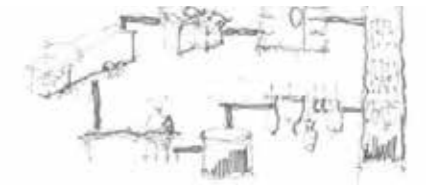
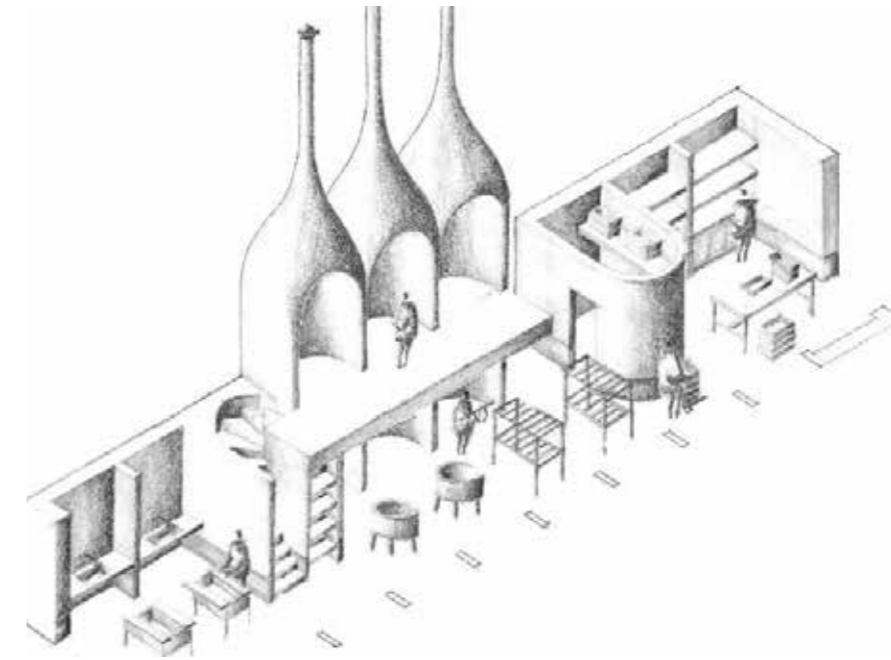
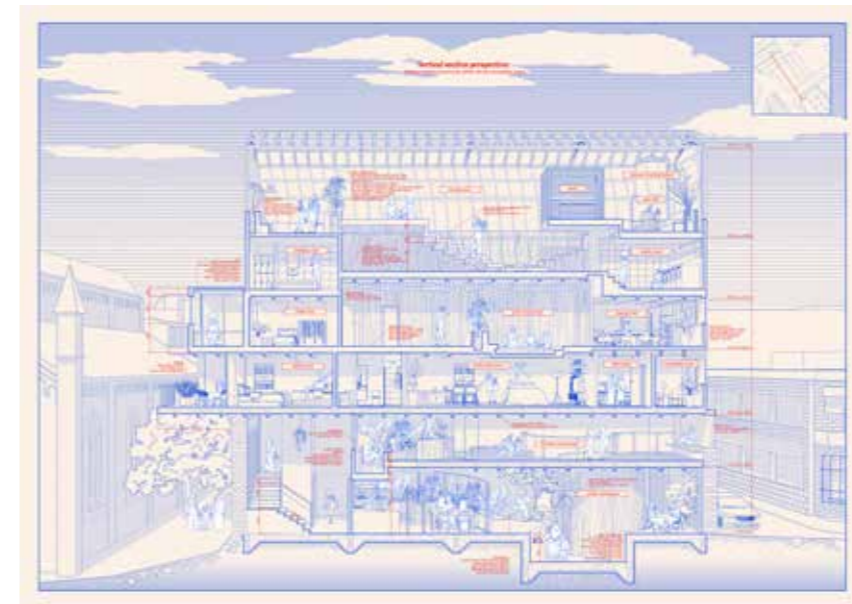
The website will provide you with information on how to apply and explains the UCAS procedure.

We may ask you to submit a portfolio alongside your application. The portfolio should contain work that demonstrates your creative capacity; this could mean showcasing your skills in three-dimensional drawing, model-making, pottery or sculpture, a spatial practice through choreography, dance, filmmaking, photography or anything that captures your individuality.

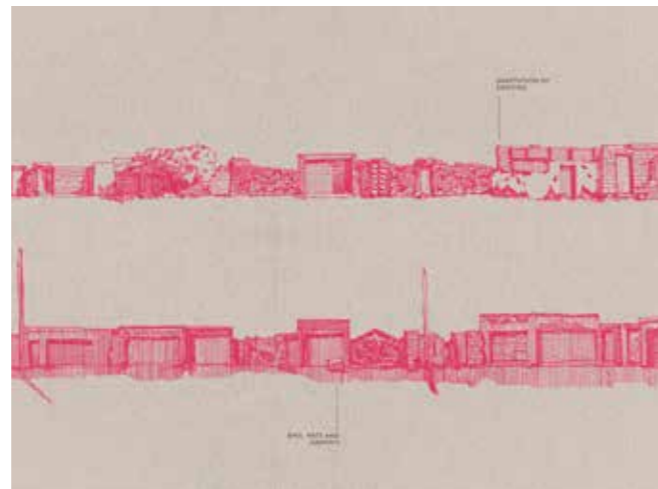
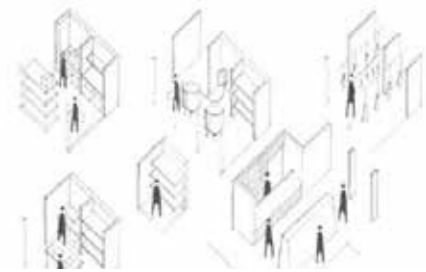
Master of Architecture (MArch)

We invite graduates from other universities who have at least a 2:1 degree classification from an undergraduate architectural programme with a strong design portfolio to apply to our MArch programme. Portfolios should contain a balance of academic and professional work, with a distinct focus on final/graduation projects from your architectural studies. Work produced within a practice context should be presented in a way that clearly identifies your individual contribution/authorship. Other work may be included, for example, a design competition, life drawings or other creative outputs.





The smoking process is defined by six key stages: filtering, brining, hanging, smoking, cooling and packaging. The process is organized along a linear arrangement to create efficiency throughout the process. The north elevation is inhabited with storage and servicing spaces to maximize space across the processing floor.



Important Legal Information

The contents of this brochure relate to the Entry 2025 admissions cycle and are correct at the time of going to press in July 2024. However, there is a lengthy period of time between printing this brochure and applications being made to, and processed by us, so please check our website at: www.cardiff.ac.uk before making an application in case there are any changes to the course you are interested in or to other facilities and services described here. Where there is a difference between the contents of this brochure and our website, the contents of the website take precedence and represent the basis on which we intend to deliver our services to you.

Your degree: Students admitted to Cardiff University study for a Cardiff University degree.

This brochure is printed on paper obtained from well managed sources using vegetable-based inks. Both the paper used in the production of this prospectus and the manufacturing process are FSC® certified.

The printers are also accredited to ISO14001, the internationally recognised environmental standard.

Mae'r ddogfen hon hefyd ar gael yn Gymraeg.
This document is also available in Welsh.

Cardiff University is a registered charity, no. 1136855

This prospectus can be made available in alternative formats, including large print (text), Braille and on audio tape/CD.

To request an alternative format please contact Laura Roberts
Email: RobertsL9@cardiff.ac.uk

Front cover artwork:
Adam Hogan, Architecture BSc/MArch