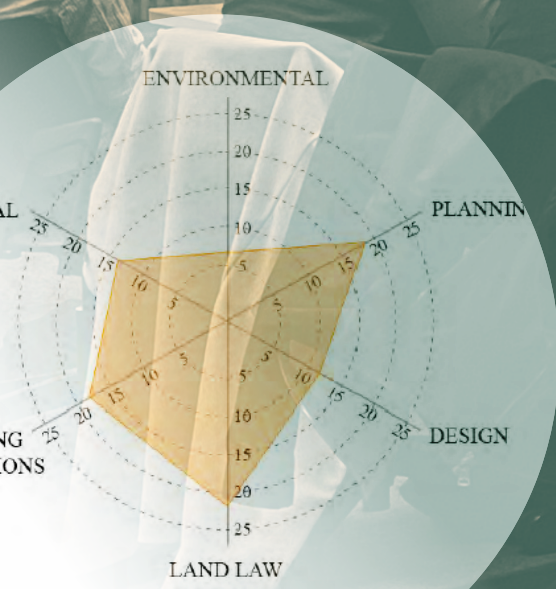


WELSH SCHOOL OF ARCHITECTURE

Master of Design
Administration



We hope that the diversity and richness of the WSA experience is reflected in the illustrations in this brochure and we would like to thank and acknowledge the very wide range of contributors for providing the pictures.

Telephone: +44 (0)29 2087 4430
Email: archi-reception@cardiff.ac.uk
www.cardiff.ac.uk/architecture

linkedin.com/school/welsh-school-of-architecture-cardiff-university
twitter.com/WSofArchi
facebook.com/welshschoolofarchitecture
instagram.com/WSofArchi

2022 Copyright©



Contents

Introduction	4
Who is this programme for?	5
Teaching Methods	5
Modules	6
Dissertation	8
Programme Director	8
Programme Staff	8

Master of Design Administration

Master of Design Administration (MDA) – aims to equip you with the expertise necessary for the successful administration and management of the design process in the procurement of buildings.

“The interaction between different backgrounds of experts, students and Professors has resulted in very interesting analysis during the course. I also appreciated the understanding of the teaching staff in the School in regards to the working students and their needs. I became aware of what is considered good management and developing a project, acquiring confidence over matters such as procurement form of contracts and construction law. I am convinced that increasing my knowledge is essential to understanding and facing different scenarios, thus improving opportunities.”

ELISA MIGLIORINI

The MDA is designed to be undertaken while in employment, and may be taken on a blended learning or 100% distance learning basis (see Teaching Methods).

The course has been developed to meet the growing need for experts in design management, both within client bodies, consultancies, and within contractors and specialist sub-contractor firms.

It is generally recognised that the huge increase in the range and complexity of methods of procuring buildings, with the design process increasingly split across a wide range of different bodies, leads to fragmentation in design decision making. This in turn can result in lack of clarity in who is responsible for which aspects of design, confusion of liability issues, and failure to achieve initial project objectives.

A key challenge facing the industry is the successful integration and management of the design process, which can run from project inception through to handover and post occupancy feedback. This challenge applies both to the demand side, i.e. to clients seeking to establish accountable and efficient procurement arrangements, and to the supply side, i.e. firms working with clients to provide design services and/or combined design and construction packages that deliver optimal design solutions.

Essential to meet this challenge is the use of innovative processes for the identification, communication and realisation of design intent. These processes must be supported by clear contractual frameworks that accurately reflect the participants' independent and shared responsibilities for achieving the design requirements in practice.

The course focuses on developing the advanced knowledge and skills required to successfully manage the developing design process, throughout all stages of a project.

Who is the programme for?

The MDA is intended for those who have a degree in a design, construction or building management field, for example architects, engineers, contractors and client representatives. All those registered on the course would normally be in employment, with several years experience, but may be looking for promotion to a more senior design management position, or perhaps to set up their own firm. Many graduates from the existing degree have gone on to become partners or directors of a firm within a relatively short time.

Teaching Methods

The MDA is offered on a full-time or part-time basis, both of which are designed to be undertaken whilst in full-time employment. The full time route takes one year (12 months), whereas the part time route takes two years, (October - December the following year).

The programme is delivered using a wide range of innovative teaching methods, and may be taken on a distance learning or blended learning (mixture of distance and on-campus) basis. There will be a series of single and two day teaching events, plus regular lunch-time webinars, online workshops given by leading experts, and a weekly blog updating you on course events and current industry developments relevant to the course.

Around 4-6 of the day events are planned to be on campus. These will be live streamed for those on the distance learning route., You will also receive regular written feedback on your work, and individual and group on-line tutorials. Supporting course material will be available in the form of detailed course notes and pre-recorded video presentations.

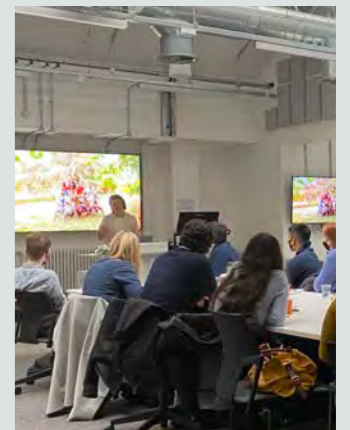
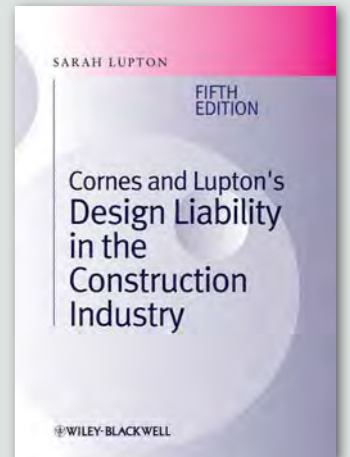
A key feature of the MDA is the small size of the cohort, which enables extensive use of interactive workshops and master classes, group working and peer review.

The MDA uses a variety of assessment methods such as feasibility studies, reports and case studies, as well as a dissertation, but without any class tests. The MDA is delivered by a team of invited expert academics and professionals.

The Programme Director takes a very hands-on approach, and is closely involved in the organisation of the course, and with teaching.

“Though I was taught through distance learning, the programme was very interactive and engaging. I highly appreciated being taught by experts that abundantly shared valuable practice-orientated experiences. I enjoyed the various topics I was exposed to ranging from project procurement and design management to construction law. The construction contracts module has allowed me to explore a wide range of interesting subjects. Most importantly, I highly appreciated the generous guidance and support provided by my Professors throughout the programme.”

HAYA MAGDY MOHAMED



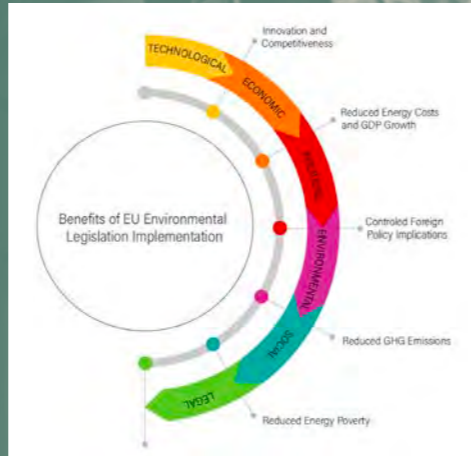
Modules

Industry context

Enables the student to develop a critical understanding of the context for the design of building projects within the UK, including factors which control the UK construction industry and the procurement and management of professional services and construction projects. It explores the key constraints and enablers for development projects, in particular those that would affect their design, including government policy, legislative instruments such as planning law and building control, and related guidance. It also examines incentives such as funding strategy and fiscal measures. A key focus in the examination of the context is the role of designers and design in the construction industry. The module provides the student with the knowledge and skill necessary to advise a client on the feasibility of a development proposal.

Construction contracts

Examines in detail the more commonly used standard forms of construction contract, including traditional and design-build forms appropriate for small and large projects. It considers methods for their administration, including where the design is provided by consultants, specialists, or contractors, or by a mixture of these. It will discuss problems that frequently occur and the causes and resolution of contractual claims, focussing throughout on issues related to design, quality management, and the management of risk.



Professional services

Examines issues relating to providing professional services, in particular design services, and to managing the provision of design services in relation to both large and small projects. It explores the role of the various construction professions, the means of assessing and agreeing terms of engagement for a building project, and outlines how the services may be integrated as part of a multi-disciplinary procurement team.

The module covers traditional and cutting edge business models for both small and large firms. The module also examines the marketing, planning, and resourcing of professional services, employment and staff-related issues, and the management of firms providing professional services.

Design Delivery

Examines in detail the pre-construction stages in project procurement, in particular the briefing process, i.e. the identification and articulation of client requirements including performance and prescriptive requirements for a design. Procedures for developing the strategic and project briefs, implementing requirements into design development, and carrying forward into tendering documentation are considered. Collaborative working and early supply chain involvement, data management (including BIM), and the implications for communication within and between firms are all explored.

Project Delivery

Examines the construction and post-construction stages in project procurement, in particular the management of design development during construction. It covers the selection and administration of more complex standard form contracts, the roles of those involved, and related issues of risk management, liability, and insurance. The module explores procedures at handover and post-handover, including interface between the providers of the facility, and its owner, users and managers. The module also enables the student to assess the merits of a typical claim on a project, and to write an adjudicator's decision relating to that claim.

International Procurement

This module examines the construction industry in selected other countries, including the role and regulation of construction professionals, methods of procurement of design services and building projects, and standard forms of contract. It also introduces the student to methods of procurement and managing of large-scale international (i.e. cross-border) construction projects. Students undertake research into an approved selected topic (normally how a topic from one of the other five modules is handled in a selected country or countries, other than the UK).

Prizes

Two prizes are awarded by the Society of Construction Law. The prize-winners over the last few years have been as follows:

Elisa Migliorini,

Best performance in the MDA, 2021.

Haya Magdy Mohamed,

Best performance in the Construction Contracts module, 2022.

Dissertation

The dissertation is an excellent way of bringing everything together and offers students an opportunity to research and develop expertise in a specialist area related to the MDA. It is anticipated that in many cases the topic chosen will relate to a current issue or problem of concern to the profession, or will relate to leading professional practice, and that the results of the study will further knowledge and/or understanding in that area. The study may involve the collection and analysis of original data, or placing an original interpretation on existing data.

Programme Director

This programme is led by Professor Sarah Lupton, who holds a personal chair at the Welsh School of Architecture and is a partner in Lupton Stellakis architects. She is dual qualified as an architect and as a lawyer. She lectures widely on subjects relating to construction law and is the author of many books, including 'Design Liability in the Construction Industry', a series on standard form building contracts, and is co-author (with Manos Stellakis, who also teaches on the course) of 'Which Contract?', of a series of books on the use of performance specification, and of a series on legislative controls. She contributes regularly to the International Construction Law Review, and acts as an adjudicator and expert witness in construction disputes. She is Chairman of the CIC Liability Panel and a member of the RIBA Professional Services Contracts Editorial Group.

Programme Staff

Professor Sarah Lupton

MA, Dip Arch, LLM, FCI Arb, C Arb, RIBA
(Programme Director)

Manos Stellakis

BSc, Dip Arch, MSc (Econ) RIBA,
(Partner, Lupton Stellakis architects;
Expert Consultant, WSA)

Programme Contacts

Professor Sarah Lupton (Programme Director)

Email: lupton@cardiff.ac.uk

Tel: +44 (0)29 2087 5966




Architecture Admissions

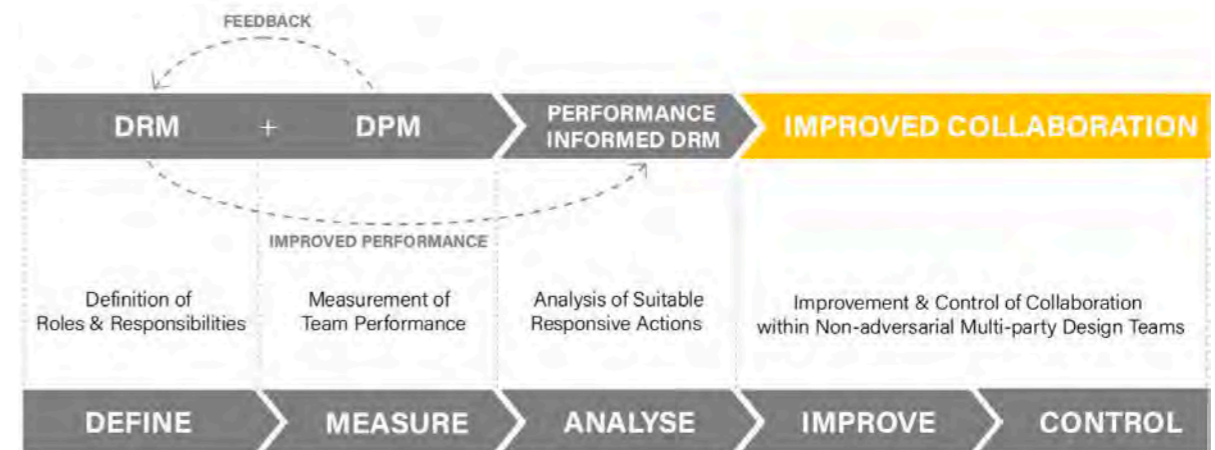
Email: ArchitectureAdmissions@cardiff.ac.uk

Tel: +44 (0)29 2087 4430

		SCENARIO ONE: THE HOSTEL	SCENARIO TWO: FOUR QUAYS
Environmental Law	Same	Climate Change Act 2008	
		The Waste Framework Directive 2008/98/EC	
		the EPA 1990(including the EPR)	
	Differences	the Noise and Statutory Nuisance Act 1993	
			The Flood Risk Regulations 2009
			Procedure Regulations 2018

RISK	Negligible	Managable	Detrimental
Ground Contamination			
SSSI/AONB/SPA Restrictions			
Flooding			
Road Expansion & Adoption			
Conservation Area Limitations			
Community Infrastructure Levy			
Section 106 Planning Obligations			

	Risks with minimal impact
	Accepted, transferred, or shared risks with medium-high impact
	Risks with critical impact that can potentially render the scheme unviable



Welsh School of Architecture
Cardiff University
Bute Building
King Edward VII Avenue
Cardiff CF10 3NB
United Kingdom

